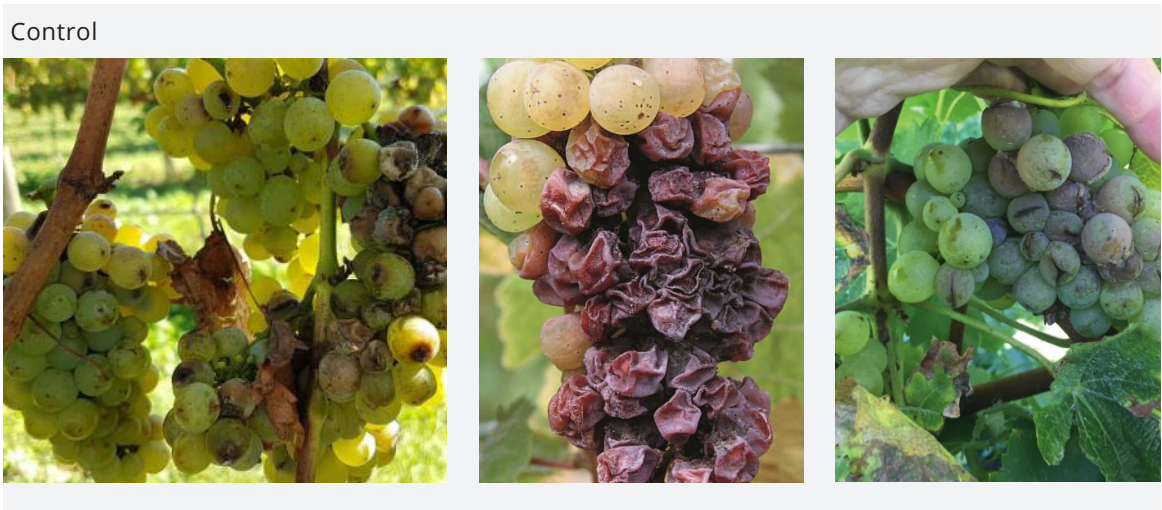


FIELD TRIALS SUMMARY | ACTIVE GROW® SPLIT FIX

**FRUIT PROTECTION
 GRAPE SPLITTING**

Conducted on Roger Rose’s vineyard: Blenheim, New Zealand / 2017

Active Grow® Split Fix applied to Sauvignon Blanc Vines in late harvest achieved **splitting reduction by 55%**.



EFFICACY AND CROP SAFETY MITIGATION OF RAIN CRACKING IN CHERRIES

Conducted Weaver Horticulture Ltd: New Zealand / 2018

ACTIVE GROW® SPLIT FIX CRACKING INDEX

Lapins Cherries / Teviot Orchard



SUMMARY

FRUIT CRACKING

There was a reduction in the incidence of fruit cracking when the fruit was evaluated with the “Cracking Index” methodology. This method was used to assess fruit cracking as the minimal rain events had not resulted in insufficient cracking to provide a significant assessment. There is some discussion internationally as to the validity of the “cracking index” however it is still accepted as the protocol to follow when assessing treatments for rain cracking.

THE RESULT WAS:

Untreated 37%,
Active Grow® Split Fix 23%

FRUIT SIZE

Fruit size was measured using a commercial Compac InVision sorter.
Average fruit size for untreated fruit was 28.6mm

Average fruit size for Active Grow® Split Fix treated fruit was 27.8

The difference in fruit size was 0.8mm

FRUIT FIRMNESS

Fruit size was measured using a commercial Compac InVision sorter.

Average fruit firmness for untreated fruit was 105.4.

Average fruit firmness for Active Grow® Split Fix treated fruit was 105.6.

There was no change in fruit firmness with the use of Active Grow® Split Fix.

TREE HEALTH

A visual assessment determined that there was no improvement or deterioration in tree health. There were no fruit or tree phytotoxic symptoms observed in the Active Grow® Split Fix treated trees.

SPLIT PREVENTATIVE TREATMENT CHERRIES

Conducted by Kiwi Cherries Ltd, Blenheim, New Zealand / 2016

OBJECTIVE. To evaluate the efficacy of Active Grow® Split Fix as a fruit split preventative treatment on cherries.

Variety: Stella cherries

Treated Area: 60 trees

Untreated Area: 80 trees

Application Details: Commercial sprayer used; 1000ltr/ha of water

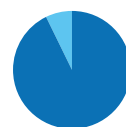
(a) Cracks within the stem cavity equal to or over 1mm.

(b) Cracks outside of the stem cavity equal to or over 1mm.

Split Assessment on 19 December 2016

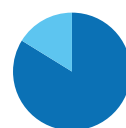
Split Assessment on 19 December 2016

Treated fruit harvested	829	total	
	60	split	7.24%
	769	sound	92.76%



Split Fruit 7.24%
Sound Fruit 92.76%

Untreated fruit harvested	1,038	total	
	168	split	16.2%
	860	sound	83.8%



Split Fruit 16.2%
Sound Fruit 83.8%

Untreated



1. Untreated block. Less foliar growth makes it easy to see through the rows.

2. Untreated leaf damage

Treated



3., 4. Treated Block shows Significant additional leaf development making it hard to see through the rows.

CONCLUSION

The reduction in split fruit, combined with the obvious healthy tree observation on the Active Grow® Split Fix treated trees, strongly suggests that Active Grow® Split Fix has potential to help cherry growers reduce fruit loss through splitting. Every year growers lose fruit because of splitting, caused by rainfall events. The rainfall on this site during the trial period was significant enough to cause fruit loss because of splitting.

D J I Jacobson

Viticultural Consultant, Blenheim, New Zealand, February 2017